

Volume 17, Number 12, December 2022

TABLE OF CONTENTS

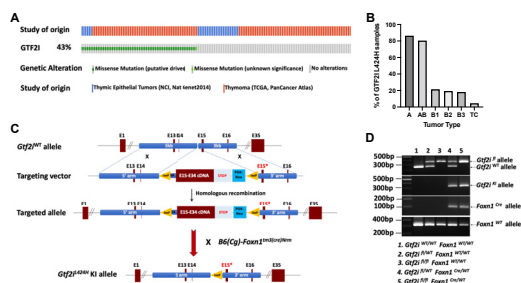
In This Issue/Research Watch/News in Brief.....1323

From the IASLC Tobacco Control Committee.....1327

EDITORIALS

**Immune Checkpoint Inhibition for Locally Advanced NSCLC:
Time to Ask New Questions?.....1330**
Jeffrey A. Bogart, MD

Pericardial Mesothelioma, a Disease for Brave Hearts.....1333
Federica Grosso, MD, Luigi Cerbone, MD, and Giulia Pasetto, MD, PhD



About the Cover: the cover image is from Figure 1 in the article by He on page 1375.

 denotes online only article

OPEN ACCESS denotes Open Access article

(continued on next page)

Journal of Thoracic Oncology (ISSN 1556-0864) is published monthly by Elsevier Inc., 230 Park Avenue, New York, NY 10169.

Postmaster: Send address changes to *Journal of Thoracic Oncology*, Elsevier Inc., 3251 Riverport Lane, Maryland Heights, MO 63043.

Customer Service: Address orders, claims, change of address to: Please visit our Support Hub page <https://service.elsevier.com> for assistance. Address changes must be submitted four weeks in advance.

Annual Subscription Rates: United States and Canada: Personal, \$925.00; All other countries: Personal, \$924.00. Prices include postage and are subject to change

without notice. Information and prices regarding single copies and special orders are available upon request.

Copyright: © 2022 International Association for the Study of Lung Cancer. Published by Elsevier Inc. This journal and the individual contributions contained in it are protected under copyright, and the following terms and conditions apply to their use in addition to the terms of any Creative Commons or other user license that has been applied by the publisher to an individual article:

TABLE OF CONTENTS (continued)

REVIEW ARTICLE

Predictive Biomarkers for Immunotherapy in Lung Cancer: Perspective From the International Association for the Study of Lung Cancer Pathology Committee1335

Mari Mino-Kenudson, MD, Kurt Schalper, MD, PhD, Wendy Cooper, M.B.B.S., PhD, Sanja Dacic, MD, PhD, Fred R. Hirsch, MD, PhD, Deepali Jain, MD, Fernando Lopez-Rios, MD, PhD, Ming Sound Tsao, MD, Yasushi Yatabe, MD, PhD, Mary Beth Beasley, MD, Hui Yu, MD, Lynette M. Sholl, MD, Elizabeth Brambilla, MD, PhD, Teh-Ying Chou, MD, PhD, Casey Connolly, MPH, Ignacio Wistuba, MD, PhD, Keith M. Kerr, MD, and Sylvie Lantuejoul, MD, PhD, IASLC Pathology Committee

ORIGINAL ARTICLES

Screening

Stage Migration and Lung Cancer Incidence After Initiation of Low-Dose Computed Tomography Screening1355

Anil Vachani, MD, MS, Nikki M. Carroll, MS, Michael J. Simoff, MD, Christine Neslund-Dudas, PhD, Stacey Honda, MD, PhD, Robert T. Greenlee, PhD, MPH, Katharine A. Rendle, PhD, MSW, MPH, Andrea Burnett-Hartman, PhD, and Debra P. Ritzwoller, PhD

Translational Oncology

Cox Proportional Hazard Ratios Overestimate Survival Benefit of Immune Checkpoint Inhibitors: Cox-TEL Adjustment and Meta-Analyses of Programmed Death-Ligand 1 Expression and Immune Checkpoint Inhibitor Survival Benefit1365

Emily Pei-Ying Lin, MD, PhD, Chih-Yuan Hsu, PhD, Jeng-Fong Chiou, MD, PhD, Lynne Berry, PhD, Leora Horn, MD, MSc, Paul Bunn, MD, James Chih-Hsin Yang, MD, PhD, Pan-Chyr Yang, MD, PhD, Alex A. Adjei, MD, PhD, and Yu Shyr, PhD

A Knock-In Mouse Model of Thymoma With the *GTF2I* L424H Mutation1375

Yongfeng He, PhD, In-Kyu Kim, PhD, Jing Bian, BS, Alexander Polyzos, PhD, Dafne Campigli Di Giammartino, PhD, Yu-Wen Zhang, MD, PhD, Ji Luo, PhD, Maria O. Hernandez, PhD, Noemi Kedei, MD, Maggie Cam, PhD, Alain C. Borczuk, MD, Trevor Lee, BS, Yumin Han, PhD, Elizabeth A. Conner, PhD, Madeline Wong, PhD, Desiree C. Tillo, PhD, Shigeki Umemura, MD, PhD, Vincent Chen, PhD, Lydia Ruan, HS, Jessica B. White, MS, Ileana C. Miranda, MSc, Parirokh P. Awasthi, MSc, Nasser K. Altorki, MD, Prajan Divakar, PhD, Olivier Elemento, PhD, Effie Apostolou, PhD, and Giuseppe Giaccone, MD, PhD

YES1 Is a Druggable Oncogenic Target in SCLC1387

Esther Redin, PhD, Eva M. Garrido-Martin, PhD, Karmele Valencia, PhD, Miriam Redrado, BS, Jose Luis Solorzano, MD, Rafael Carias, MD, Mirari Echepeare, MS, Francisco Exposito, PhD, Diego Serrano, PhD, Irene Ferrer, PhD, Angel Nunez-Buiza, MS, Irati Garmendia, PhD, Juana M. Garcia-Pedrero, PhD, Alfonso Gurpide, MD, Luis Paz-Ares, MD, PhD, Katerina Politi, PhD, Luis M. Montuenga, PhD, and Alfonso Calvo, PhD

(continued on next page)

TABLE OF CONTENTS (continued)

Non-Small Cell Lung Cancer

OPEN ACCESS **Efficacy of Brigatinib in Patients With Advanced ALK-Positive NSCLC Who Progressed on Alectinib or Ceritinib: ALK in Lung Cancer Trial of brigatinib-2 (ALTA-2) 1404**

Sai-Hong Ignatius Ou, MD, PhD, Makoto Nishio, MD, PhD, Myung-Ju Ahn, MD, PhD, Tony Mok, MD, Fabrice Barlesi, MD, PhD, Caicun Zhou, MD, PhD, Enriqueta Felip, MD, PhD, Filippo de Marinis, MD, Sang-We Kim, MD, PhD, Maurice Pérol, MD, Geoffrey Liu, MD, MSc, Maria Rita Migliorino, MD, Dong-Wan Kim, MD, PhD, Silvia Novello, MD, PhD, Alessandra Bearz, MD, Pilar Garrido, MD, PhD, Julien Mazieres, MD, PhD, Alessandro Morabito, MD, Huamao M. Lin, PhD, Hui Yang, PhD, Huifeng Niu, PhD, Pingkuan Zhang, MD, and Edward S. Kim, MD

OPEN ACCESS **Durvalumab After Sequential Chemoradiotherapy in Stage III, Unresectable NSCLC: The Phase 2 PACIFIC-6 Trial 1415**

Marina C. Garassino, MD, Julien Mazieres, MD, Martin Reck, MD, Christos Chouaid, MD, Helge Bischoff, MD, Niels Reinmuth, MD, Laura Cove-Smith, MBChB, Talal Mansy, MBBS, Diego Cortinovis, MD, Maria R. Migliorino, MD, Angelo Delmonte, MD, José Garcia Sánchez, MD, Luis Enrique Chara Velarde, MD, Reyes Bernabe, MD, Luis Paz-Ares, MD, Ignacio Diaz Perez, MD, Nataliya Trunova, MD, Kayhan Foroutanpour, PhD, and Corinne Faivre-Finn, MD

BRIEF REPORT

Multimodality Therapy in Patients With Primary Pericardial Mesothelioma..... 1428

Michael Offin, MD, Dilanka L. De Silva, FRACP, Jennifer L. Sauter, MD, Jacklynn V. Egger, BS, Ellen Yorke, PhD, Prasad S. Adusumilli, MD, FACS, Andreas Rimner, MD, Valerie W. Rusch, MD, FACS, and Marjorie G. Zauderer, MD

LETTERS TO THE EDITOR

What About Palliative and Supportive Care Landscapes? e95
Tadashi Nishimura, MD

In Response: Letter Received From Dr. Tadashi Nishimura Titled “What About Palliative and Supportive Care Landscapes?” e95
Dhruba Deb, MD, Amy C. Moore, PhD, and Upal Basu Roy, PhD, MPH

Photocopying: Single photocopies of single articles may be made for personal use as allowed by national copyright laws. Permission is not required for photocopying of articles published under the CC BY license nor for photocopying for non-commercial purposes in accordance with any other user license applied by the publisher. Permission of the publisher and payment of a fee is required for all other photocopying, including multiple or systematic copying, copying for advertising or promotional purposes, resale, and all forms of document delivery. Special rates are available for educational institutions that wish to make photocopies for non-profit educational classroom use.

Derivative Works: Users may reproduce tables of contents or prepare lists of articles including abstracts for internal circulation within their institutions or companies. Other than for articles published under the CC BY license, permission of the publisher is required for resale or distribution outside the subscribing institution or company.

For any subscribed articles or articles published under a CC BY-NC-ND license, permission of the publisher is required for all other derivative works, including compilations and translations.

Storage or Usage: Except as outlined above or as set out in the relevant user license, no part of this publication may be reproduced, stored in a retrieval system or transmitted in any form or by any means, electronic, mechanical, photocopying, recording or otherwise, without prior written permission of the publisher.

Permissions: For information on how to seek permission visit www.elsevier.com/permissions or call: (+44) 1865 843830 (UK) / (+1) 215 239 3804 (USA).

Author rights: Author(s) may have additional rights in their articles as set out in their agreement with the publisher (more information at <http://www.elsevier.com/authorsrights>).

Notice: The statements and opinions contained in the material herein are solely those of the individual authors and contributors and not those of the International Association for the Study of Lung Cancer or Elsevier Inc. Practitioners and researchers must always rely on their own experience and knowledge in evaluating and using any information, methods, compounds or experiments described herein. Because of rapid advances in the medical sciences, in particular, independent verification of diagnoses and drug dosages should be made. To the fullest extent of the law, no responsibility is assumed by the publisher or the IASLC for any injury and/or damage to persons or property as a matter of products liability, negligence or otherwise, or from any use or operation of any methods, products, instructions or ideas contained in the material herein. Although all advertising material is expected to conform to ethical (medical) standards, inclusion in this publication does not constitute a guarantee or endorsement of the quality or value of such product or of the claims made of it by its manufacturer.

Reprints: To order 100 or more reprints for educational, commercial, or promotional use, please contact Derrick Imasa, Commercial Reprints Department, Elsevier Inc., 230 Park Avenue, New York, NY 10169; phone (212) 633-3874; fax (212) 462-1935; e-mail: reprints@elsevier.com.

For advertising orders and inquiries: North and South America: Courtney Leonard, Elsevier Inc., 230 Park Avenue, New York, NY 10169; phone (732) 779-3368; e-mail: c.leonard@elsevier.com. Europe/ROW: Robert Bayliss, Elsevier Inc., 125 London Wall, London, EC2Y 5AS, UK; phone (+44) (20) 7424 4454; e-mail: r.bayliss@elsevier.com.

Journal of Thoracic Oncology is indexed in Current Contents/Clinical Medicine, Science Citation Index Expanded (SCIE), Journal Citation Reports/Science Edition, and MEDLINE.